

# NEW EV CHARGING STATION INSTALLATION AT XYZ LOCATION

1234 E MAIN ST, MANTECA, CA 9123, USA

EPC CONTRACTOR

YOUR LOGO

PROFESSIONAL ENGINEERING



SIGNATURE WITH SEAL

ELECTRICAL ONLY  
DATE:10/30/2024

PROJECT INFORMATION

**NEW EV CHARGING  
STATION INSTALLATION  
AT XYZ LOCATION**

**1234 E MAIN ST,  
MANTECA,  
CA 9123, USA**

REVISIONS

DESCRIPTION	DATE	REV
IFC SET	10/30/2024	0

SHEET SIZE  
22" X 34"

SHEET NAME  
**TITLE SHEET**

SHEET NUMBER  
**G-1.0**

### APPLICABLE CODES & STANDARDS

- 2020 NATIONAL ELECTRICAL CODE (NEC)
- 2022 CALIFORNIA RESIDENCE CODE (CRC)
- 2022 CALIFORNIA BUILDING CODE (CBC)
- 2022 CALIFORNIA GREEN BUILDING CODE (CGBC)
- 2022 CALIFORNIA MECHANICAL CODE (CMC)
- 2022 CALIFORNIA PLUMBING CODE (CPC)
- BUILDING STANDARDS CODE AS APPLICABLE AND AS AMENDED BY THE LOCAL AUTHORITY HAVING JURISDICTION.
- LOCAL ELECTRICAL NEWS LETTERS, ORDINANCES AND POLICIES.

### SCOPE OF WORK

THIS PROJECT INCLUDES THE INSTALLATION OF (01) POWER UNIT (200 KW ) ,(01) BLUEBERRY PLUS (DISPENSER) ,(01)BLUEBERRY SATELLITE & (01) BLUEBERRY (50KW), ALONG WITH THE ASSOCIATED LOW VOLTAGE ELECTRICAL EQUIPMENT (480/277V,400A/3P/4W). ELECTRICAL EQUIPMENT TO INTERCONNECT WITH PACIFIC GAS & ELECTRIC AT NEW SERVICE METER.

### SHEET INDEX DETAILS

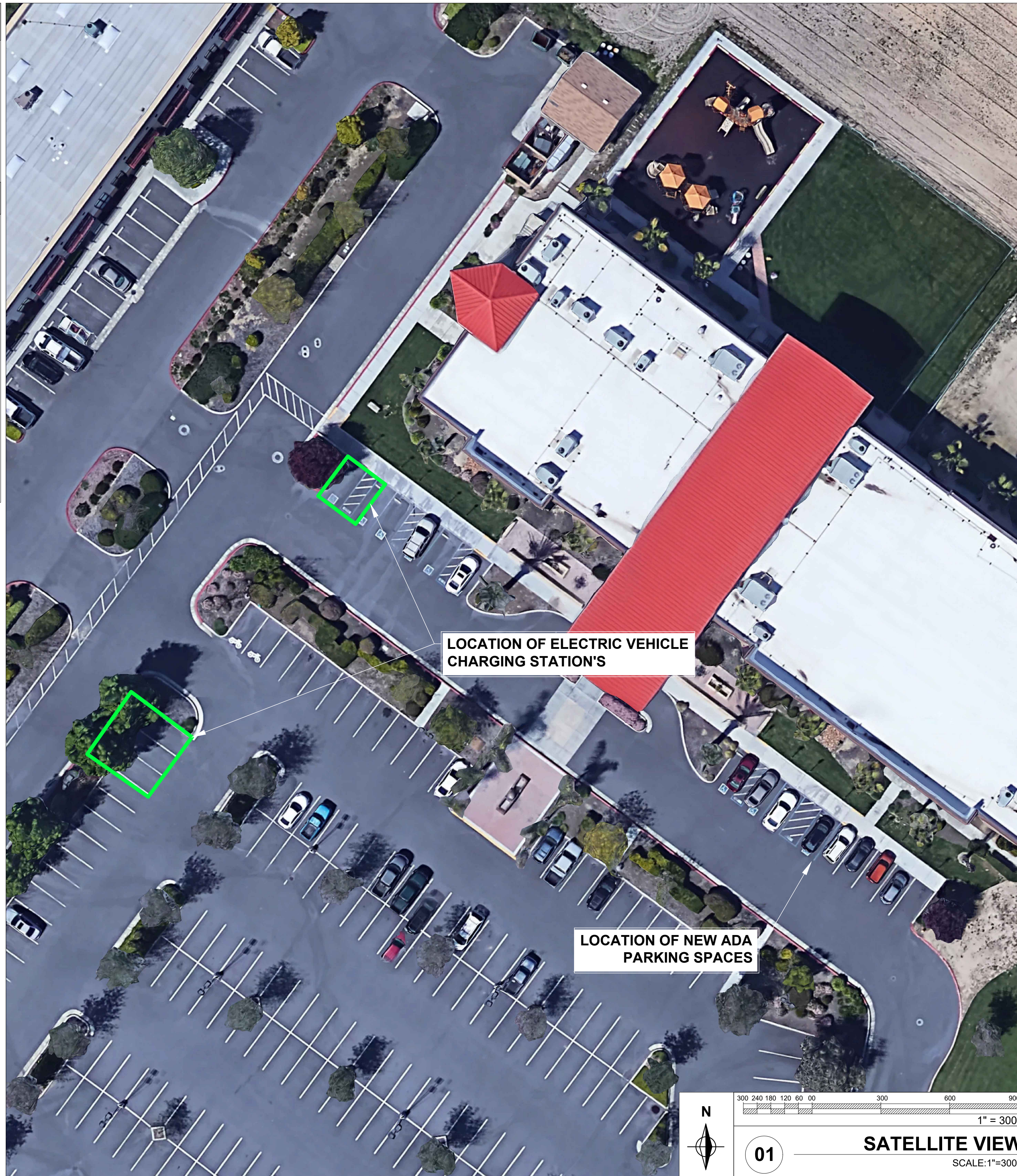
SHEET NO	SHEET DETAILS	REVISION NO
G-1.0	TITLE SHEET	0
G-1.1	GENERAL & ELECTRICAL NOTES	0
E-1.0	OVERALL PLAN	0
E-1.1	SITE PLAN-01	0
E-1.2	SITE PLAN-02	0
E-2.0	AC SINGLE LINE DRAWING	0
E-2.1	DC SINGLE LINE DRAWING	0
E-3.0	INSTALLATION DETAILS	0
E-3.1	GROUNDING DETAILS	0
E-3.2	EQUIPMENT ELEVATION DETAILS	0
E-4.0	PLACARD & DETAILS	0
E-5.0	DATA SPECIFICATIONS	0

### PROJECT SUMMARY

SITE ADDRESS : 1234 E MAIN ST, MANTECA, CA 9123, USA  
GPS COORDINATES : 42.121306, -164.120389  
UTILITY NAME : PACIFIC GAS & ELECTRIC  
EPC CONTRACTOR : YOUR COMPANY

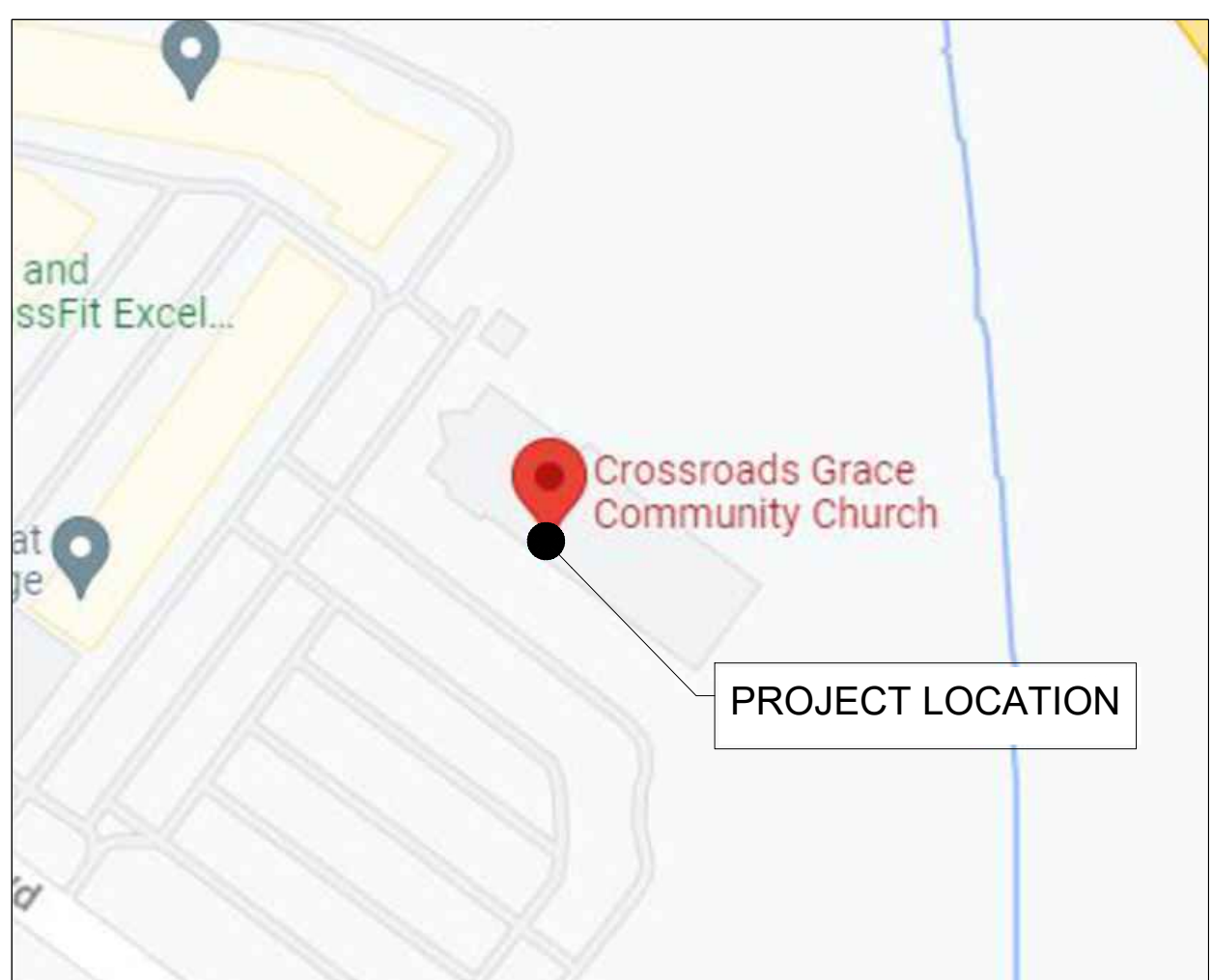
### SITE PARAMETERS & SYSTEM DETAILS

EV CHARGING STATION : (01) POWER UNIT (200 KW ) ,  
(01) BLUEBERRY PLUS (DISPENSER)  
(01) BLUEBERRY SATELLITE  
(01) BLUEBERRY (50KW)  
SWITCHBOARD : 480/277V, 600A, 3P/4W SWITCH BOARD,  
WITH 65 KAIC, (01) 450AT/600AF MAIN  
BREAKER , 24/7 ACCESSIBLE, SERVICE  
ENTRANCE RATED, N-G BOND RATED,  
(01) 350A/3P BREAKER, (01) 80A/3P  
BREAKER, (02) 10A/3P BREAKERS &  
(01) 15A/3P SPARE BREAKER.  
PG&E METERING SECTION  
ASHRAE MAX TEMPERATURE : 35.4°C  
ASHRAE MIN TEMPERATURE : 0.6°C



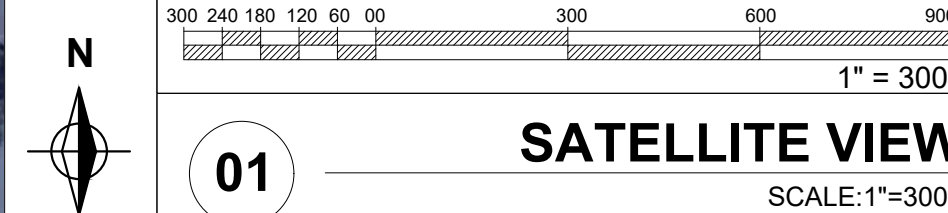
LOCATION OF ELECTRIC VEHICLE  
CHARGING STATION'S

LOCATION OF NEW ADA  
PARKING SPACES



PROJECT LOCATION

VICINITY MAP  
SCALE: NTS



01 SATELLITE VIEW  
SCALE: 1"=300"