

NEW SOLAR PHOTOVOLTAIC GROUND MOUNT SYSTEM - XYZ PROJECT

SYSTEM SIZE: 1412.40 kW-DC, 1225.0 kW-AC
123 E MAIN ST, BOURBONNAIS, IL 60914, USA

EPC CONTRACTOR

YOUR LOGO

PROFESSIONAL ENGINEERING



SIGNATURE WITH SEAL

ELECTRICAL ONLY
DATE: 10/30/2024

PROJECT INFORMATION

**XYZ PROJECT
SOLAR PV SYSTEM
1412.40 kW DC
1225.0 kW AC**

**123 E MAIN ST,
BOURBONNAIS,
IL 60914, USA**

REVISIONS

DESCRIPTION	DATE	REV
PERMIT SET	10/30/2024	0

SHEET SIZE
22" X 34"

SHEET NAME
TITLE SHEET

SHEET NUMBER
G-1.0

APPLICABLE CODES & STANDARDS

- 2020 NATIONAL ELECTRIC CODE (NEC)
- 2020 ILLINOIS ELECTRIC CODE (IEC)
- 2021 ILLINOIS MECHANICAL CODE (IMC).
- 2021 ILLINOIS BUILDING CODE (IBC).
- 2021 ILLINOIS EXISTING BUILDING CODE (IEBC).
- BUILDING STANDARDS CODE AS APPLICABLE AND AS AMENDED BY THE LOCAL AUTHORITY HAVING JURISDICTION.
- LOCAL ELECTRICAL NEWS LETTERS, ORDINANCES AND POLICIES.

SCOPE OF WORK

THE PV SYSTEM, CONSISTING OF (2568) SOLAR4AMERICA, S4A550 -144MH10STT (550W) & (07) SOLECTRIA XGI 1500 175KW INVERTERS, WILL BE COMBINED AND CONNECTED THROUGH A PV DISCONNECT TO THE LINE SIDE OF THE EXISTING 480/277V/3P/4W SECONDARY SERVICE METER IN UTILITY INCOMING SECTION FED BY THE EXISTING UTILITY TRANSFORMER. FENCE PERMIT WILL BE APPLIED SEPERATELY.

SHEET INDEX DETAILS

SHEET NO	SHEET DETAILS	REVISION NO
G-1.0	TITLE SHEET	0
G-1.1	GENERAL & ELECTRICAL NOTES	0
E-1.0	OVERALL SITE PLAN	0
E-1.1	SITE PLAN	0
E-1.2	ARRAY LAYOUT	0
E-1.3	STRINGING PLAN - 01	0
E-1.4	STRINGING PLAN - 02	0
E-2.0	AC SINGLE LINE DRAWING	0
E-2.1	DC SINGLE LINE DRAWING	0
E-2.2	BILL OF MATERIALS	0
E-3.0	INSTALLATION DETAILS	0
E-3.1	GROUNDING DETAILS	0
E-3.2	INSTALLATION DETAILS	0
E-3.3	EQUIPMENT ELEVATION DETAILS	0
E-3.4	TYPICAL FENCE DETAIL	0
E-3.5	COMMUNICATION DETAILS	0
E-4.0	PLACARDS & DETAILS	0
E-5.0	DATA SPECIFICATIONS	0

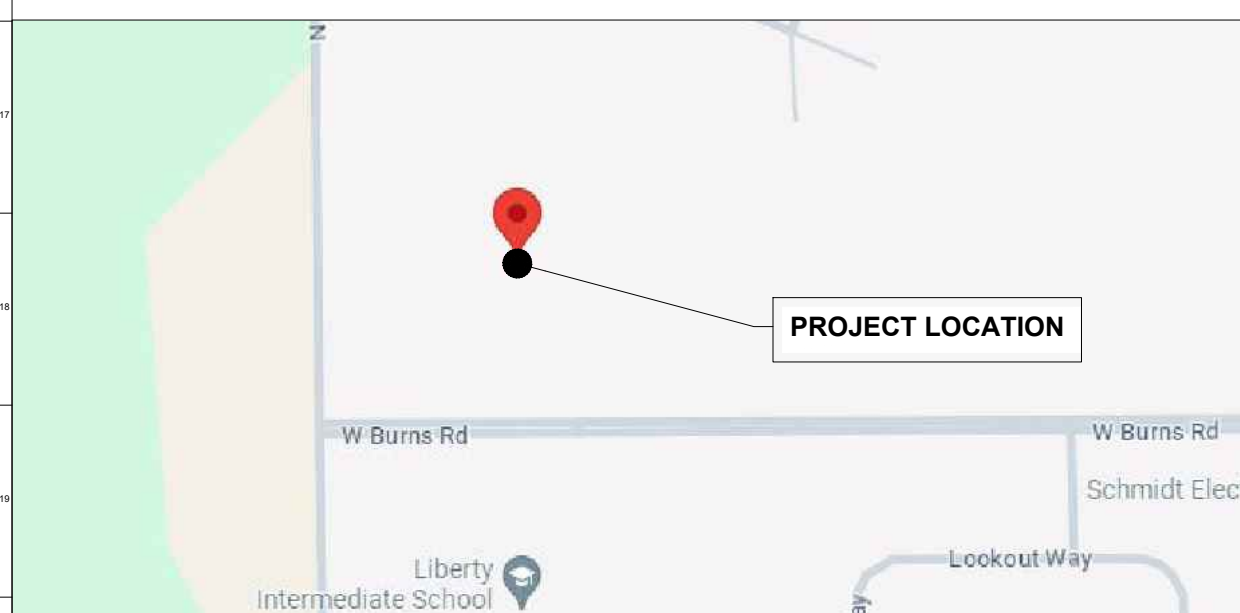


PROJECT SUMMARY

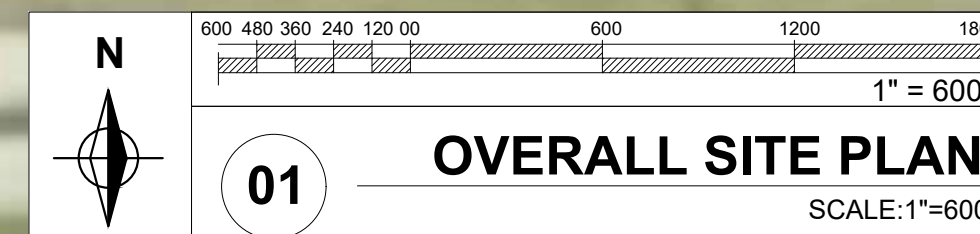
SITE ADDRESS : 123 E MAIN ST, BOURBONNAIS, IL 60914, USA
GPS COORDINATES : 38.156152, -65.458159
UTILITY NAME : COMMONWEALTH EDISON

SITE PARAMETERS & SYSTEM DETAILS

DC OUTPUT POWER : 1412.40 kW
AC OUTPUT POWER : 1225.0 kW
DC/ AC RATIO : 1.15
PV MODULES : (2568) SOLAR4AMERICA S4A550-144MH10STT (550W)
PV INVERTERS : (07) SOLECTRIA XGI 1500 175KW
RACKING : SINCLAIR DESIGNS
MODULE TILT : 30°
AZIMUTH : 180
SYSTEM INTX VOLTAGE : 480/277V - 3 PHASE
MAXIMUM DC VOLTAGE : 1500VDC
ASHRAE MAX TEMPERATURE : 35.2°C
ASHRAE MIN TEMPERATURE : -23.9°C
WIND LOAD : 107 MPH
SNOW LOAD : 20 PSF



02 VICINITY MAP
SCALE: NTS



01 OVERALL SITE PLAN
SCALE: 1"=600'